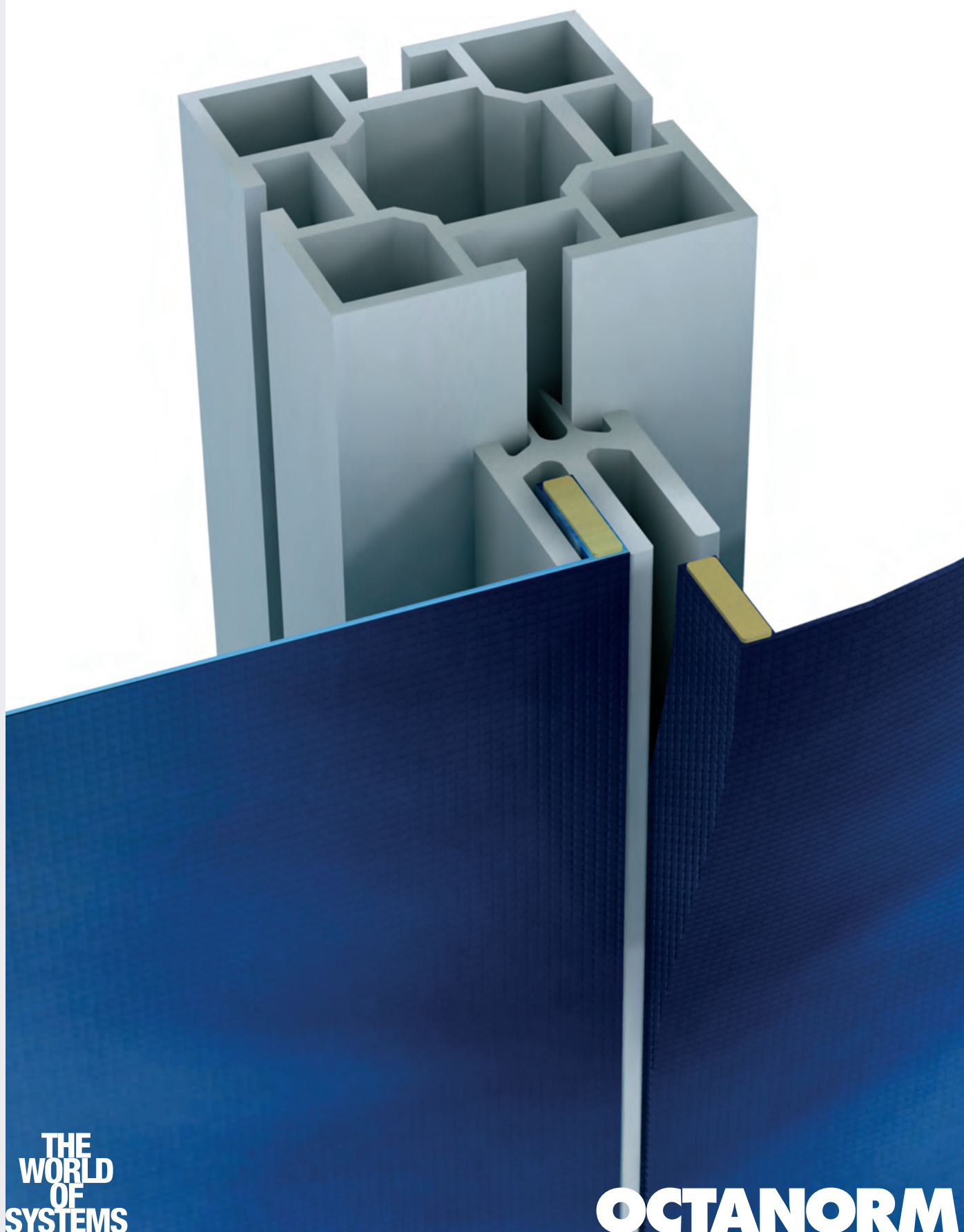


.FABRIC SUSPENSION
EXTRUSIONS M 1317...

.STOFFHALTEPROFILE
M 1317...

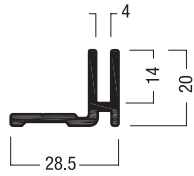
exhibition systems
interior design systems
presentation systems



THE
WORLD
OF
SYSTEMS

OCTANORM 

**.PARTS AND
ACCESSORIES.
.BAUTEILE UND
ZUBEHÖR.**

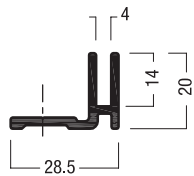
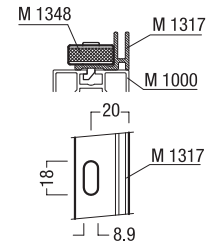


**FABRIC SUSPENSION EXTRUSION
STOFFHALTEPROFIL**

M 1317.01

aluminium
6000 mm long
4.74 lbs

Aluminium
6000 mm lang
2,15 kg

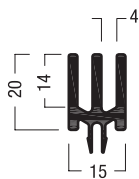


**FABRIC SUSPENSION EXTRUSION
STOFFHALTEPROFIL**

M 1322.01

aluminium
with 11 x slots 8.9 x 18 mm
for mounting fabric elements using M 1313
6000 mm long
4.74 lbs

Aluminium
mit 11 x Lochungen 8.9 x 18 mm
für Befestigung von Stoffelementen in Verbindung mit M 1313
6000 mm lang
2,15 kg

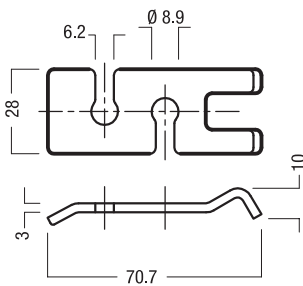
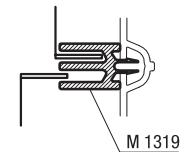


**FABRIC SUSPENSION EXTRUSION
STOFFHALTEPROFIL**

M 1319.35

plastic, hard
with double fabric retaining groove
for mounting fabric elements using M 1313
6000 mm long

Kunststoff, hart
mit zweifach Stoffaufnahme-Nut
zur Befestigung von Stoffelementen
in Verbindung mit M 1313
6000 mm lang

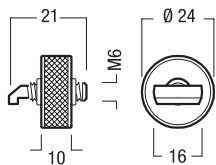
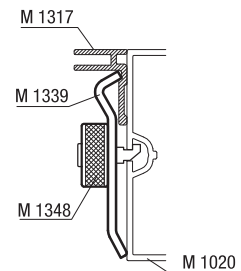


**FIXING CLIP
HALTEKLAMMER**

M 1339.37

steel
for mounting extrusion M 1317 to system groove 4.3 mm,
using M 1348,
all-purpose for 80 and 120 mm square extrusions
0.09 kg

Stahl
für die Befestigung von Profil M 1317 an Systemnut 4,3 mm,
in Verbindung mit M 1348,
universell verwendbar für Vierkantprofile 80 und 120 mm
0,04 kg

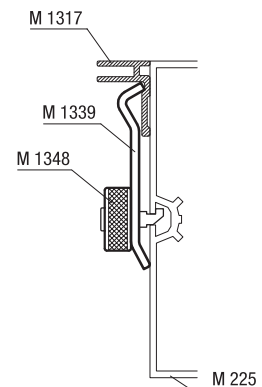


**FIXING-SET M6
BEFESTIGUNGS-SET M6**

M 1348.37

steel
for quick mounting of extrusion M 1317
to system groove 4.3 mm

Stahl
für die schnelle Befestigung von Profil M 1317
an Systemnut 4,3 mm



AW 7930_06_2008